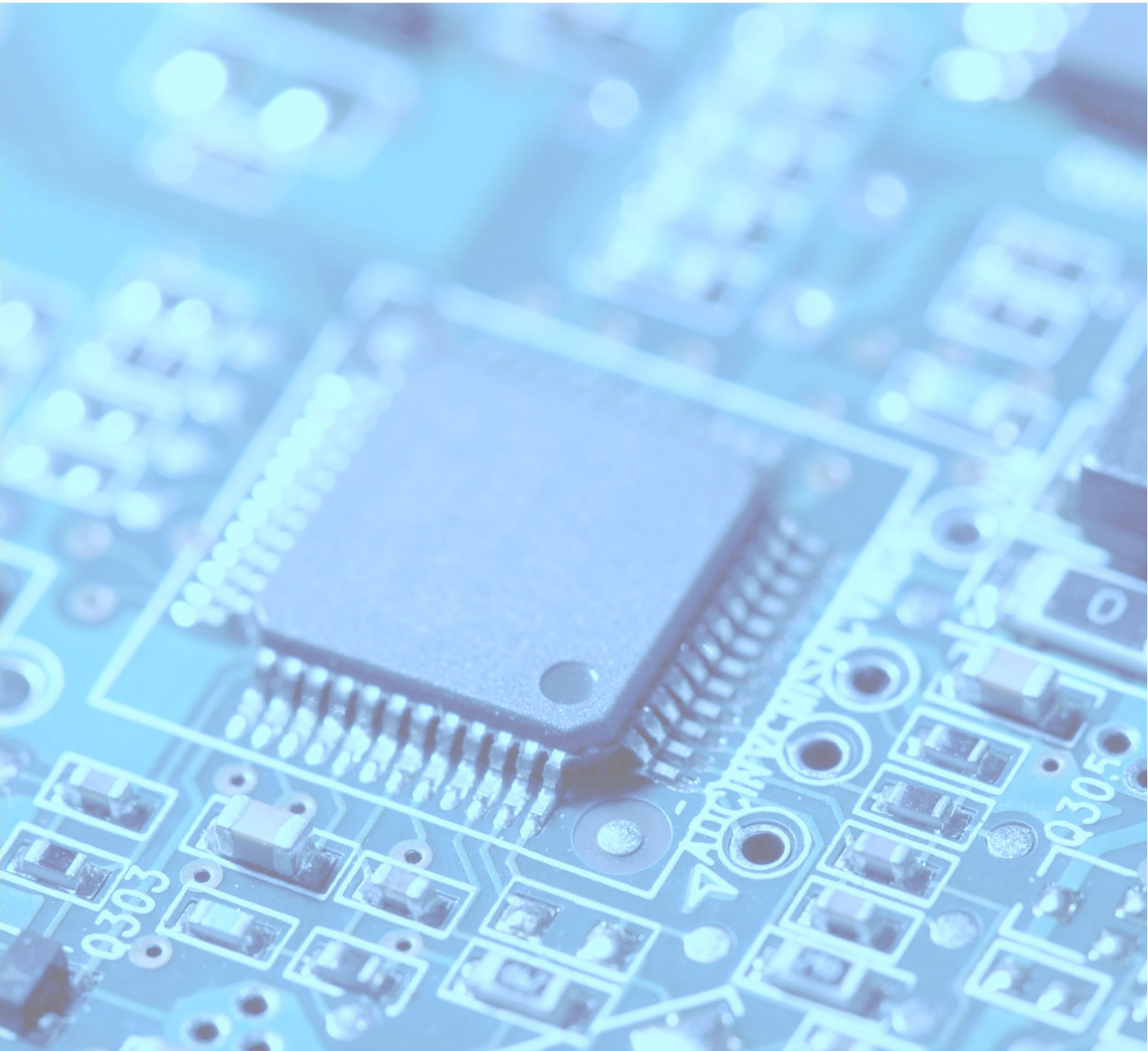




Discontinued Intel/Enpirion PoLs

Cross Reference



Intel Enpirion Part Number	V _{in} Range	V _{out} Range	I _{out}	Flex Power Modules Alternative 1	Flex Power Modules Alternative 2
EM2280P01QI	4.5-16 V	1.5-1.3 V	80 A	BMR4690000/001	
EM2260P01QI	4.5-16 V	0.5-1.3 V	60 A	BMR4690000/001	BMR4668004/001
EM2040N01QI	4.5-16 V	0.5-1.3 V	40 A	BMR4696001/001	BMR4641008/001
EM2140P01QI	4.5-16 V	0.7-1.325 V	40 A	BMR4696001/001	BMR4641008/001
EM2030L01QI	4.5-16 V	0.5-1.325 V	30 A	BMR4696001/001	BMR4641008/001
EM2130H01QI	4.5-16 V	1.35-3.6 V	30 A	BMR4696001/001	BMR4641008/001
EM2130L01QI	4.5-16 V	0.7-1.325 V	30 A	BMR4696001/001	BMR4641008/001
EM2130L02QI	4.5-16 V	0.7-1.325 V	30 A	BMR4696001/001	BMR4641008/001
EM2120H01QI	4.5-16 V	1.325-5 V	20 A	BMR4696001/001	BMR4631008/001
EM2120L01QI	4.5-16 V	0.7-1.325 V	20 A	BMR4696001/001	BMR4631008/001
EN23F0QI	4.5-14 V	0.75-3.3 V	15 A	BMR4615001/001	
EN23F2QI	4.5-13.2 V	0.75-3.3 V	15 A	BMR4615001/001	
EN29A0QI	9-16 V	0.75-3.3 V	10 A	BMR4613001/001	
EN2390QI	4.5-14 V	0.75-3.3 V	9 A	BMR4613001/001	
EN2392QI	4.5-13.2 V	0.75-3.3 V	9 A	BMR4613001/001	
EN2360QI	4.5-14 V	0.75-5 V	6 A	PMU8318	
EN2340QI	4.5-14 V	0.75-5 V	4 A	PMU8218	
EN2342QI	4.5-14 V	0.75-5 V	4 A	PMU8218	

These alternatives are not drop-in replacements but offer similar functionality in a different pinout and/or package size. Board redesign will be necessary.

All packages shown are SMT, but other packages are available (e.g. PTH and SIP) which may offer additional layout or production benefits.