



DESCRIPTION THERMAL MODEL FOR PKU4116C



Contents

General.....	2
Model Description	2
3D CAD Geometry.....	2
Domains of power loss distribution	3
Domains of material data.....	4
Model Calibration.....	4
Model Usage	6
Additional Information	7
Reference.....	7
Disclaimer.....	7
Revision history	7
Appendix 1 - Power Loss Distribution	8

General

The model is an estimation of the thermal behavior of PKU4116C, which is an open frame through hole design. The mechanical structure, PCB stack-up, components and materials are similar to other products in the same family, which means that this thermal model is applicable for several products within the same family.

The model is intended for steady-state thermal simulations.

Model Description

The model is a readymade Flotherm 11.1 model. The model consists of three major components:

3D CAD Geometry

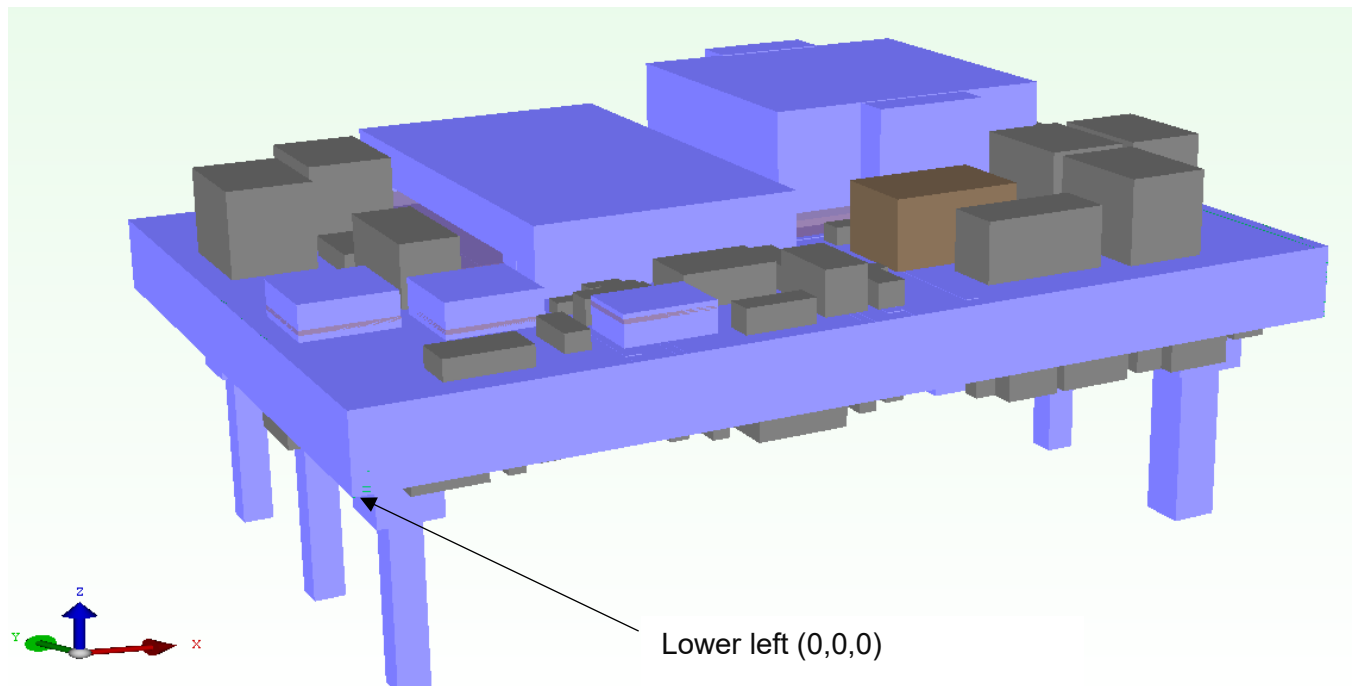


Figure 1

In the geometry most components are maintained per the original design but have been simplified in FloMCAD to cuboids. The PCB has been modeled as a bulk, with inserts of low conducting areas. In order to capture vias, the via sets are processed as geometry entities.

Origin has been placed so that [0,0,0] is in the lower left corner of the PCB.

Unit in file: [mm]

Domains of power loss distribution

There are several sources for power loss. The power loss for each of them, at certain combinations of module voltage and current, are given in *Appendix 1 - Power Loss Distribution*.

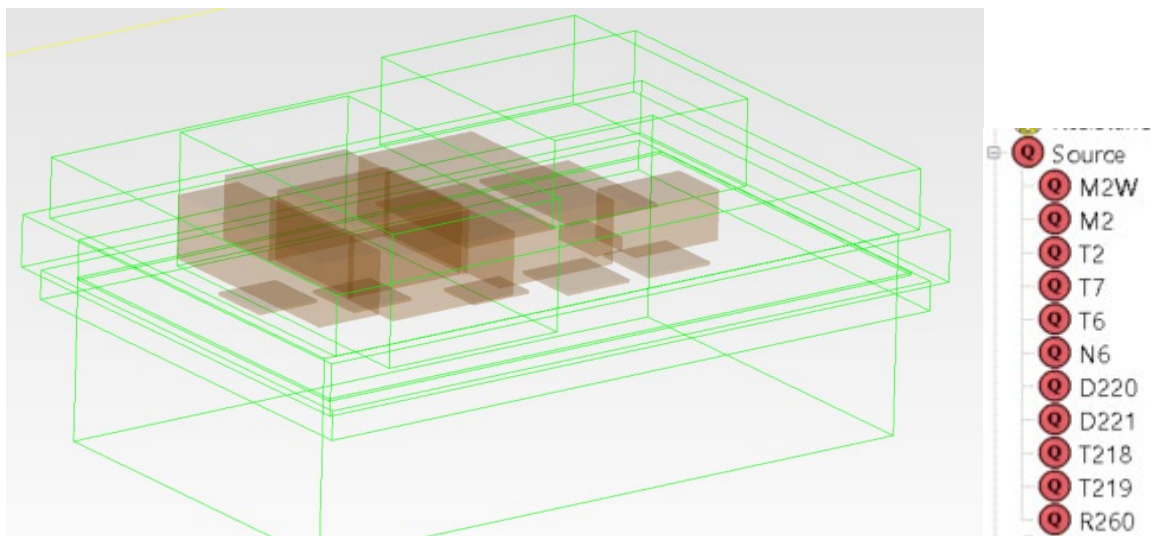


Figure 2 Domains of power losses

Domains of material data

There are several material domains. The heat conductivity for each of them is given either as isotropic, or anisotropic values in x-,y-, and z-direction (x,y,z) in the figures following.



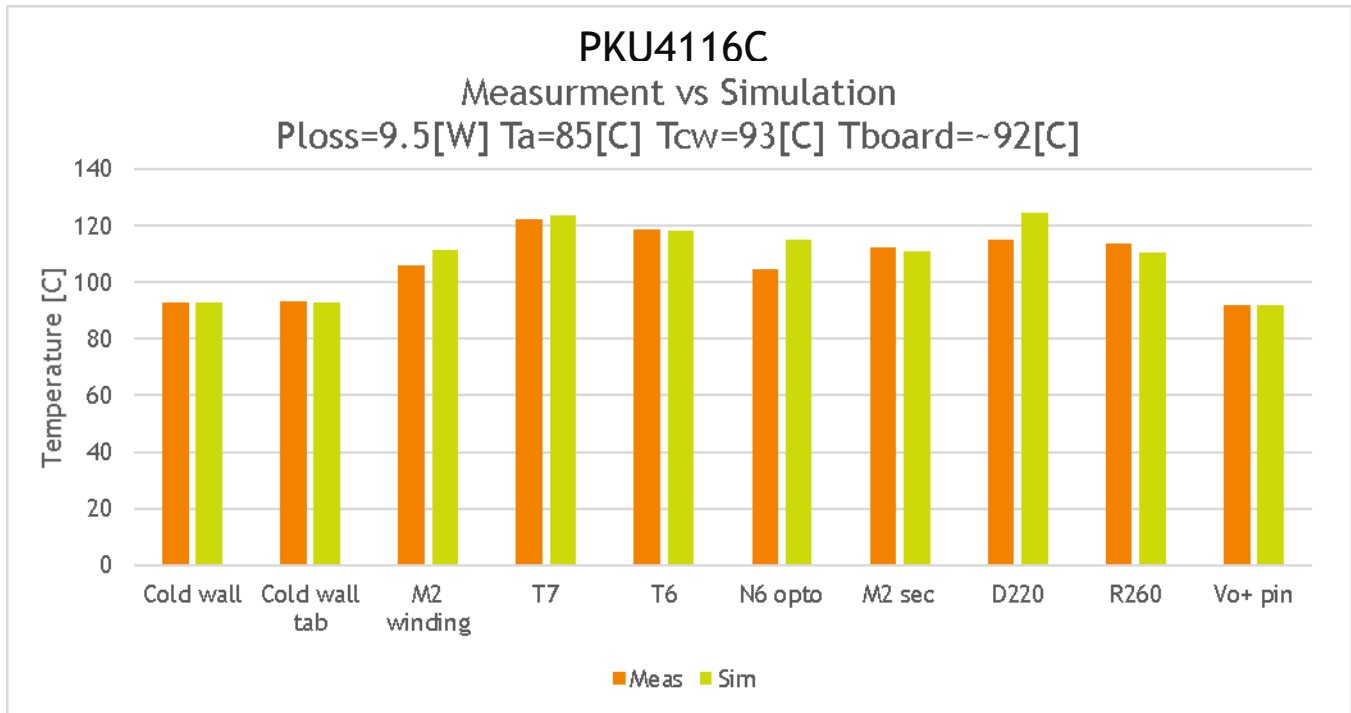
Figure 3: Materials

Note. The given heat conductivity is only intended to model the temperature distribution of the module in this application. The values should not be treated as physical true or transferable to other applications.

Model Calibration

The model has been calibrated to give temperatures as similar as possible for $V_{in}=48[V]$, $V_{out}=30[V]$, $I_{out}=3.33[A]$, compared to thermal verification document of this product (1/102 65-BMR 671 05/1102 A). According to the measurement settings, the temperature of baseplate, BPL, was set to 93[C], and the testboard temperature was set to 91.9[C], assuming Vo+pin represents this closely. Total Ploss=9.3[W].

The result of the calibration can be seen in Figure 4.



Type	Cold wall tab	M2 winding	T7	T6	N6 opto	M2 sec	D220	R260	Vo+ pin	Tamb
Meas	93.2	105.9	122.4	118.8	104.6	112.4	115.3	113.6	91.9	85.8
Sim	93.0	111.5	123.8	118.4	115.1	110.9	124.7	110.4	92.1	82.7

Figure 4: Model calibration result

As a reference the calibration set-up is provided as an assembly “Verification assembly”, see Figure 5. This assembly should be deleted when the model is imported into a project.

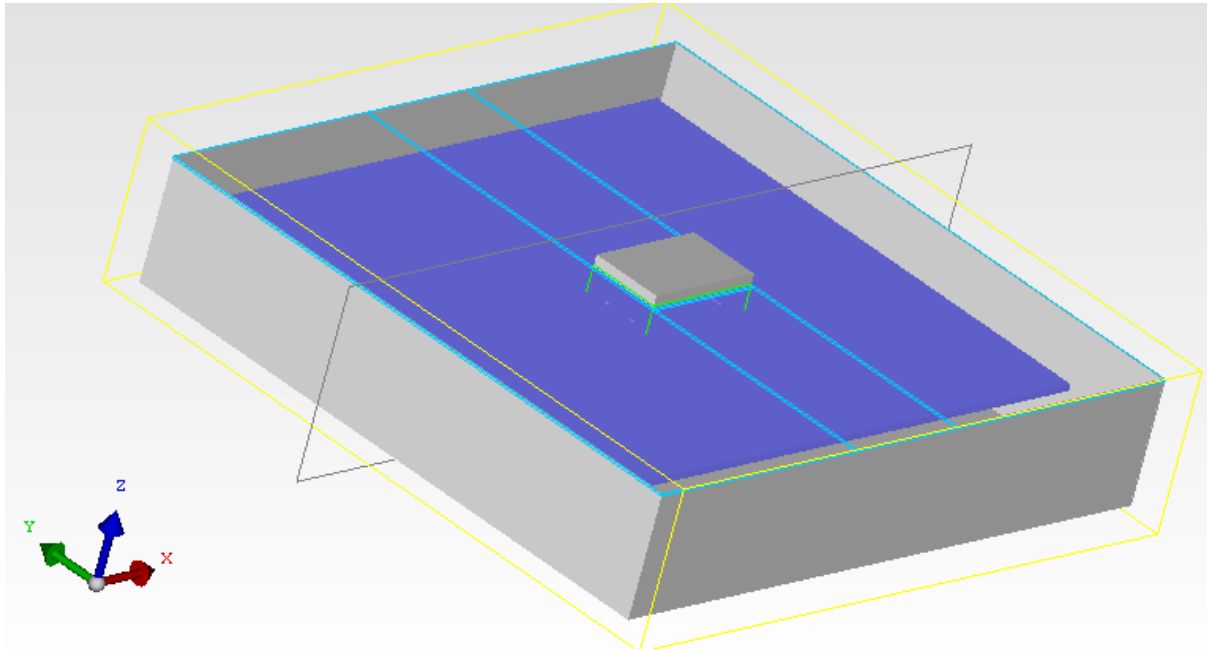


Figure 5 Thermal Verification Test Set-Up

Model Usage

Import the *.pdml file into the desired project. Delete the assembly “Thermal Verification Test Set-Up”.

Assign power losses per table in *Appendix 1 - Power Loss Distribution* to the sources in section *Domains of power loss distribution*. Default settings are for $V_{in}=48[V]$, $V_{out}=30[V]$, $I_{out}=3.33[A]$, $T \approx 100[C]$

If the model is rotated, make sure that the orientation of the orthotropic materials properties are preserved (also rotated).

Do not change the order of power sources and geometry objects, as this can change the power and material settings.

The module temperatures can be monitored in predefined monitor points, which corresponds to the measured points in the thermal verification. These temperatures are not intended for pass/fail criteria.



Additional Information

Model has been constructed with SI units.

Reference

Thermal report of this product *1/102 65-BMR 671 05/1102 A*
PKU411C data file A.pdml

Disclaimer

The model and model documentation described herein are provided for the sole purpose of facilitating thermal modeling of a structure where the referenced product is included. It should not and cannot be interpreted neither as a detailed description of the product itself, nor as a statement of the product's performance.

The model has been constructed on a best effort basis, but we cannot accept liability for any discrepancy between model predictions and actual values.

Revision history

A	2023-04-06	New document
B	2023-04-17	Update in appendix 1 in the table



Appendix 1 - Power Loss Distribution

Power loss distribution example for BMR 671 05/1102.

$V_{in}=48[V]$, $V_{out}=30[V]$, $I_{out}=3.33[A]$, $T\approx 100[C]$

Source	Number of domains	Per domain [W]	Total [W]
M2 winding	(*)	(*)	2.6
M2 core	1	0.8	0.8
T2	1	0.5	0.5
T7	1	1.2	1.2
T6	1	0.1	0.1
N6 opto	1	0.1	0.1
D220	1	1.2	1.2
D221	1	1.6	1.6
T218	1	0.8	0.8
T219	1	0.3	0.3
R260	1	0.1	0.1
Total [W]			9.3

(*) Defined as Source/Volume. Adjust source so that the total adds up.